



NOURISHING COMMUNITY FY21: A YEAR IN REVIEW





CBS 8 TV Segment

FRIENDS OF THE FARM,

“Nourishing Community” is at the heart of everything we do at Coastal Roots Farm and in the community. It is with great pride that we share accomplishments of the past year, possible only with the support of our community who continually invests in our impact and participates in our programs.

Our passionate team has planted, harvested, and distributed more organic, locally grown food to hungry San Diegans as well as offered more equitable, accessible programming for youth and families than ever before. We are grateful to continue feeding our priority populations during a time of such high need.

I have particularly enjoyed working side-by-side with the team and our community of volunteers to design and build new spaces including our new indoor/outdoor Farm STEM-Science Lab and Teaching Kitchen as well as our new Nature Play and Environmental Learning Space for our community to experience the Farm. There,

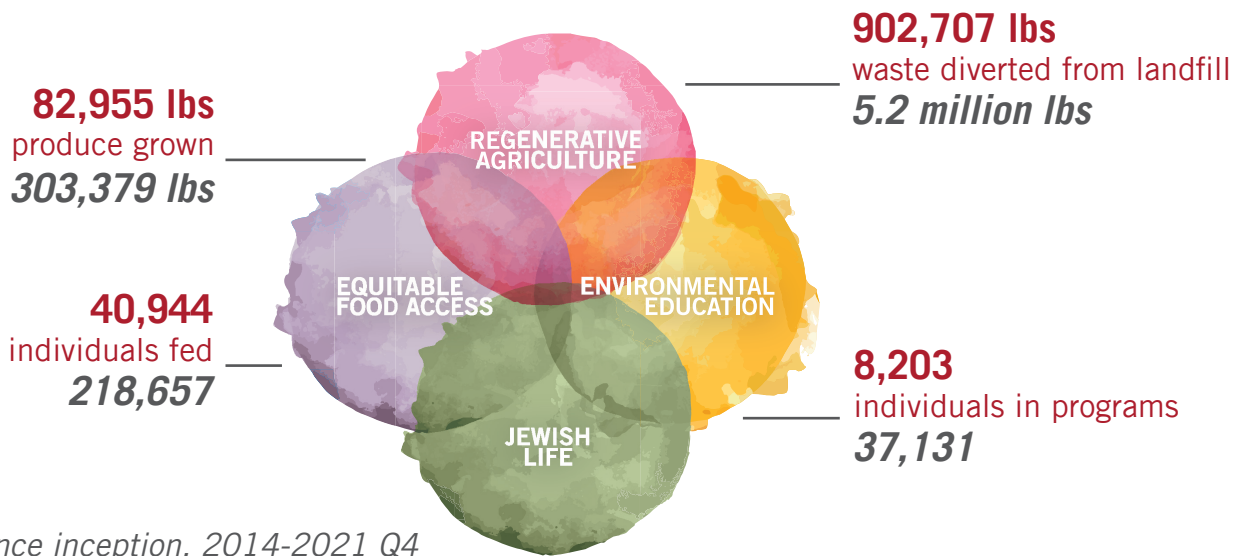
young “Farmers-in-Training” will play and learn during School and Group Visits, Farm Camp, and Birthday Parties, and the larger community will connect and celebrate at Community Programs and Events.

We are looking forward to deepening our partnership with other organizations that share our commitment to people and planet. As our Shmita year of reflection and connection has just begun, our team has reaffirmed its commitment to soil health and reducing the impacts of climate change and welcoming youth to learn about food and farming as they become the next generation of environmental leaders.

We are excited for the year ahead and look forward to seeing you soon on the Farm!

JAVIER GUERRERO
PRESIDENT AND CEO

FY21 IMPACT AT A GLANCE



WHAT A YEAR IT'S BEEN

43%
MORE FOOD
GROWN

using regenerative, organic farming to build a better food system and ensure a more sustainable future for our region

62%
MORE FOOD
DONATED

reaching the most marginalized, food-insecure members of our community

101%
MORE YOUTH
REACHED

including those who have been historically underserved through equitable, accessible nature-based learning



REDUCING HUNGER

**DONATED
71% OF FOOD
GROWN**

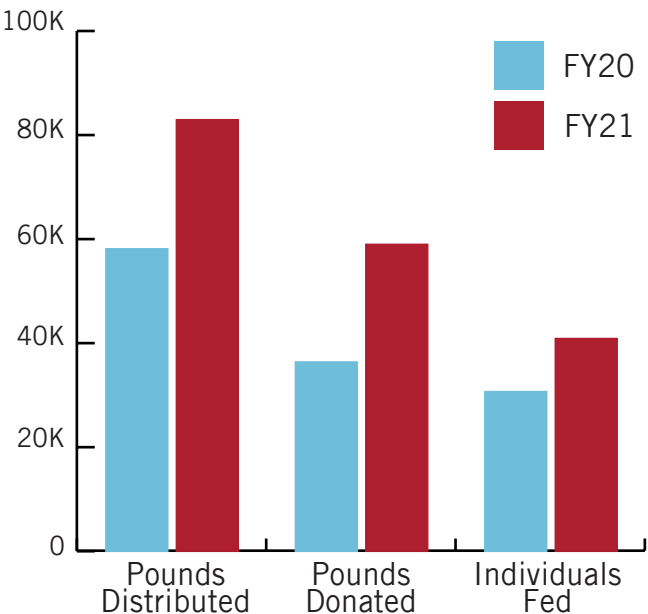


41,000 PEOPLE FED

We reached more community members with more food when it mattered most.

We prioritize feeding:

- Low-income seniors and families
- Holocaust survivors
- Active-duty military and veterans
- Immigrants and refugees
- Indigenous and Native families



SENIOR SPOTLIGHT

The pandemic has disproportionately impacted the lives of seniors, resulting in food insecurity and social isolation. The Farm remains committed to supporting healthy and active aging by providing dignified access to fresh, healthy food, education that inspires good nutrition, one-on-one social connections, and meaningful opportunities to engage with the community. Our Organic Food Distribution program has been tailored to accomodate - or designed specifically to reach - high-risk seniors. Oftentimes we are their only access point for these resources.

141 senior families received 14,440 pounds of produce through regular, no-cost home deliveries.



Distribution at Mercy Housing's Catebria Senior Homes

CREATING ENVIRONMENTAL LEADERS

BY THE NUMBERS

We utilize our 17-acre outdoor “classroom” for environmental education, exploration, connection to nature, and career pathway experiences.



3,688 students
attended 153 School
and Group Visits



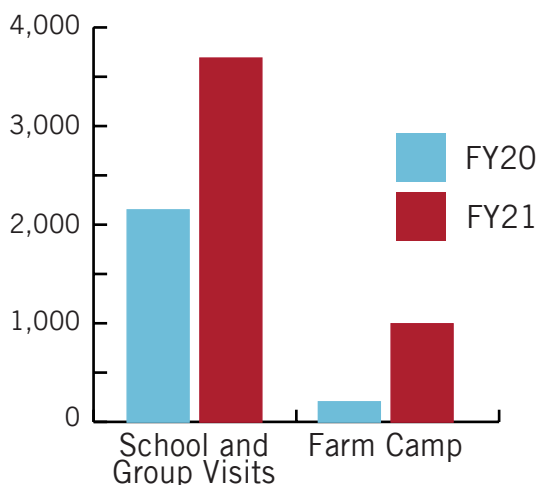
1,001 campers
attended 45 Farm
Camp pods



**402 volunteers
and interns**
contributed 2,198
hours

“They came home with dirty clothes and big smiles, talking about the bugs, their counselors, and their friends!”

PROGRAM GROWTH



At the Farm, nobody is turned away for inability to pay.

**70% OF YOUTH
RECEIVED
PROGRAM
SCHOLARSHIP**



CREATING A SUSTAINABLE FUTURE FOR OUR REGION

AN EXCEPTIONAL GROWING YEAR

We care for our community while being good stewards of our land and soil, reducing the impacts of climate change and improving the food system. Thanks largely to **newly activated silvopastures** in our Food Forest, we **grew 43% more food** and provided critical food access to community members in San Diego where **food insecurity is at a decade-high**.



82,955 pounds
of food grown



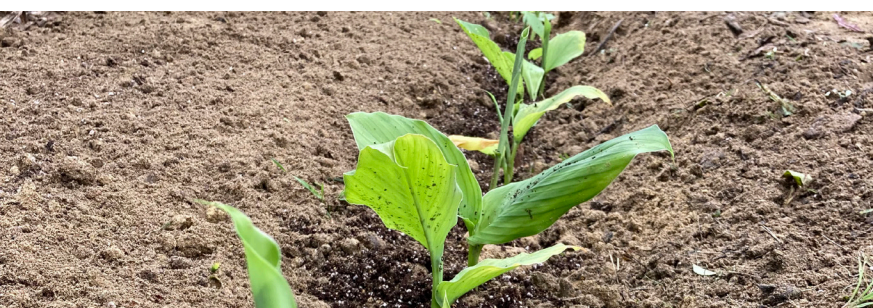
26,340 eggs
distributed



902,707 pounds
of waste composted

BUILDING MICROCLIMATES

Microclimates help control temperature and moisture, attract beneficial pests, provide windcover, and increase crop diversity. This year, we developed more microclimates in the Food Forest (for example, planted **tropical bananas**), allowing growth of new crops not typically resilient in our dry landscape including **asparagus**, **culinary mushrooms**, **ginger**, and **turmeric**.



NATIVE CALIFORNIA

The Farm acknowledges the land we steward as the **traditional land of the Kumeyaay and Luiseño peoples**.

This year, we began establishing new hedgerows of medicinal herbs and native plants, a small step forward in honoring the history of this land and its local indigenous peoples.

Turmeric in the Food Forest



GATHERING IN COMMUNITY

FROM DRIVE-THRU TO WALK-THRU

There’s nothing like stepping foot on the Farm. We were grateful to invite our community out from behind their steering wheels and screens to safely experience programs in person again.



Farm, Film, and Music Series event

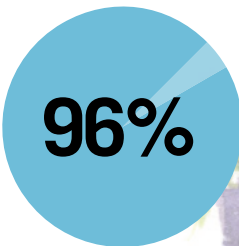


Tu B'Shvat Food Forest Festival

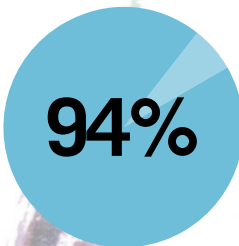
A JEWISH HOME FOR ALL

We demonstrate the modern application of Jewish traditions and wisdom in ways that support sustainable farming, uplift collaborative food justice efforts, and improve community life.

“As a family that is not Jewish, it was amazing to learn how the Farm implements Jewish farming traditions. The entire Sukkot Harvest Festival felt so warm and welcoming!”



of Sukkot survey respondents say Farm programs make them feel more connected to our community.



of Sukkot survey respondents believe the Farm is an accessible and inclusive place



THANK YOU Q4 FUNDERS

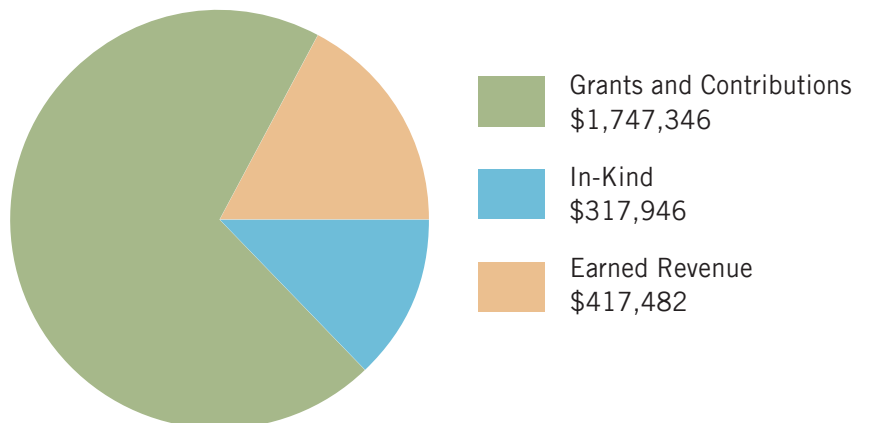
Geovanna Baldestamon
Beth Israel Men's Club
City National Bank
Costco
Bert Edelstein and Karen Helrich
Elaine Galinson and Herbert Solomon
General Atomics Inc.
Generous Old Geezers
Joseph and Chrissy Gerber
Marla Goodman
Alex Goodman
Sharyn Goodson
Bonnie Harstein
Intuit
Leichtag Foundation
Morgridge Family Foundation
Leilani Rasmussen
Bernard Reiter
Rachel Ruderman

Samuel H. French & Katherine Weaver French Fund
San Diego Gas & Electric
San Diego Jewish Community COVID-19 Emergency Fund
San Marcos ARPA Community Grant Program
San Marcos Community Foundation
Sprouts Healthy Communities Foundation
Stern Leichter Foundation
Sell and Chris Tamson
The Albertsons Companies Foundation
The Charles, Isle, and Peter Dalebrook Charitable Fund
The Community Service Association of the San Diego Unified School District
The Culture Insurance Group
US Bank
Julia Varnergardner
Vistica Wealth Advisors

For a complete list of Farm Founder's Circle Members, Corporate Partners, and Foundation and Government Support, please visit coastalrootsfarm.org/support.



FY21 REVENUE



Join us as we cultivate healthy, connected communities.

Coastal Roots Farm is a 501(c)(3) Nonprofit Organization (Federal Tax ID 47-1570910).