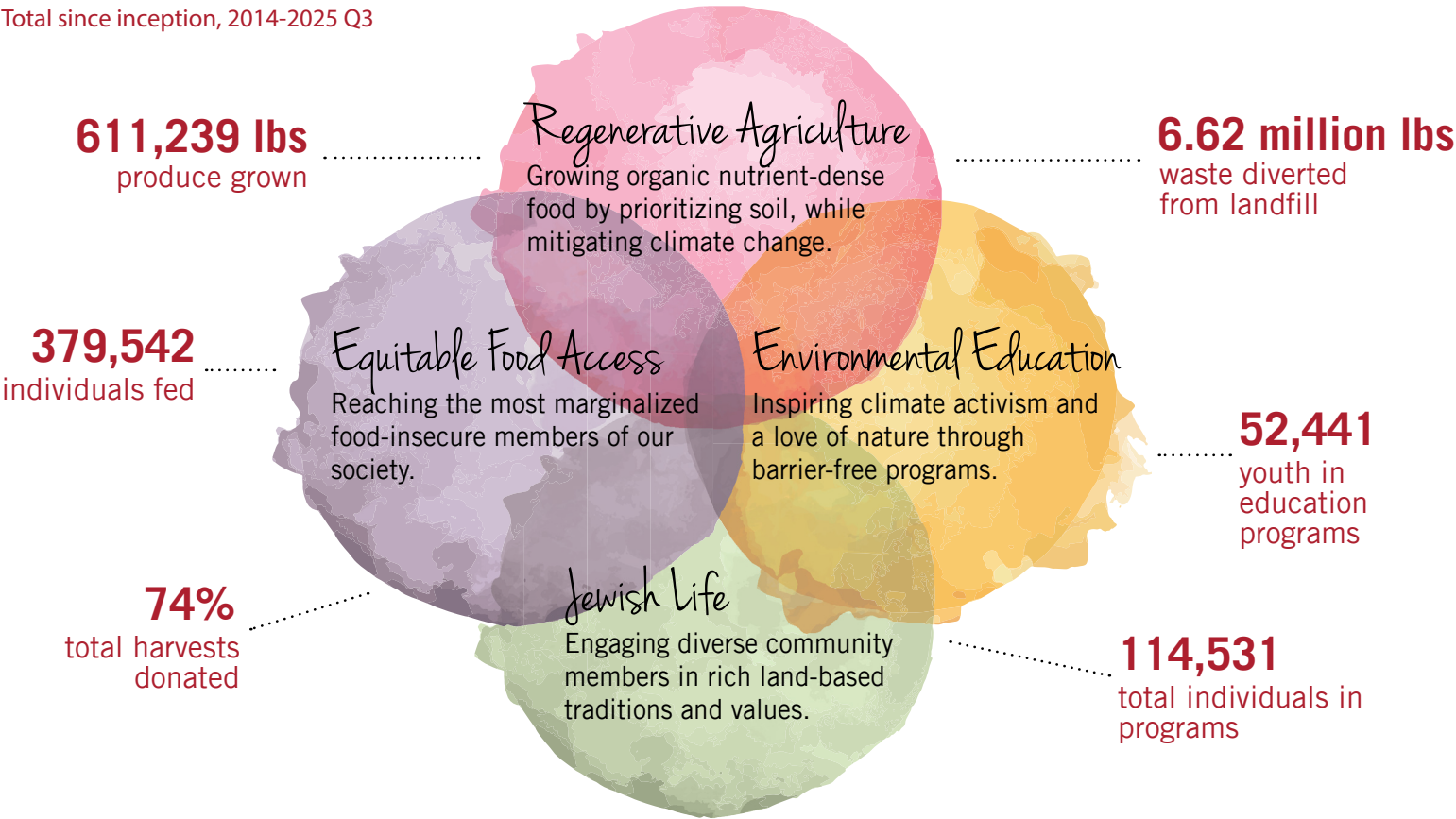




FY25 QUARTER 3 IMPACT REPORT

IMPACT AT A GLANCE

Total since inception, 2014-2025 Q3



CELEBRATING A DECADE IN BLOOM

This quarter, over 300 guests gathered at our sold-out Taste of the Farm celebration, honoring 10 years of impact and planting seeds for the next decade. **With the Leichtag Foundation’s support sunsetting, community investment is critical** to ensure the Farm thrives into the future.

The evening featured chef-curated tasting stations, seasonal cocktails, live music, and a heartfelt “Raise the Shovel” moment. Thanks to our supporters, including Title Sponsor U.S. Bank, over 30 additional sponsors, and many who gave generously—we **raised more than \$300,000** to sustain and grow our work.





FARMING AND FEEDING

QUARTER 3 IMPACT (APRIL-JUNE 2025)



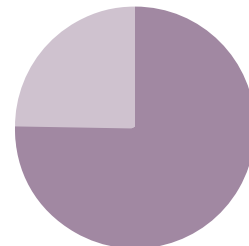
22,291 lbs

of organic food grown using [regenerative techniques](#) that restore soil health, sequester carbon, and conserve water.



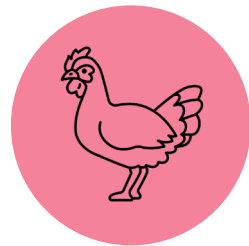
13,726 people

including low-income seniors and families, Holocaust survivors, veteran, Latinx, and Indigenous/Native families.



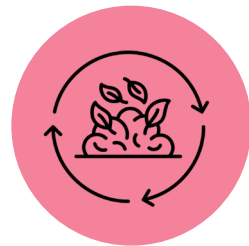
76% donated

through our Pay-What-You-Can Farm Stand and during no-cost off-site distributions in partnership with other social service and food system orgs.



3,696 eggs

produced by chickens that aerate and fertilize the soil and support with pest management.



21,980 lbs

of waste diverted from the landfill and turned into rich, biodiverse soil.



FROM MICROBES TO MEALS: HOW WE FARM

Our regenerative farming practices were featured on **CBS 8 San Diego**, showcasing how we care for the soil as much as the food it grows. At Coastal Roots Farm, climate-smart methods like composting and cover cropping grow nutrient-rich food while storing carbon and reducing atmospheric carbon dioxide.

The segment also featured Salk Institute research aligned with our practices, illustrating how our “Field-to-Research” approach addresses climate change.

As Adam McCurdy, our Director of Farm Production and Distribution, shared on air: *“We are what we eat—but more deeply, we are what we walk on. It’s the soil, the Earth. It’s all connected.”*

ROOTED IN COMMUNITY NUTRITION

This season’s harvest brought tomatoes, squash, and hearty greens to our neighbors. We also activated Pe’ah Fields 3 and 4, planting perennials like yacon, callaloo, and tree collards for year-round resilience.

At our Pay-What-You-Can Farm Stand, neighbors can access up to \$30 of free produce through a dignified, private checkout.

Q3 Highlight: **76% of visitors used the pay-what-you-can sliding scale option**, made possible by customers who pay retail prices and contributors that invest in our work to support equitable food access.



A Farm Stand Beneficiary shared: *“I have struggled with a chronic illness for several years and have been unable to work. The Farm Stand has helped me immensely with food and it makes me relieved to have this resource available to me.”*



LEARNING AND GATHERING

QUARTER 3 IMPACT (APRIL-JUNE 2025)



3,012 youth

reached through Pre-K - 12th grade programs including [Nature Play](#), [Farm Camp](#), [After School on the Farm](#), and [Field Trips](#).



395 volunteers

dedicated 1,311 hours through programs including [Community Volunteering](#), [Private Groups](#) and [Internships](#).



958 people

attended Jewish holiday programs, workshops, and [community events](#) on the Farm.



FARM CAMP KICK OFF

Farm Camp season began this quarter, welcoming **100 campers each week across 10 vibrant weeks**.

Kids dug into the soil, fed chickens, and explored Jewish values through food, play, and nature. It’s hands-on environmental education at its most joyful and formative.

SHAVUOT TO SHABBAT: A SEASON OF FARM-FILLED GATHERINGS

From Farm Camp for Grown Ups to Great Outdoor Shabbat, Shavuot with Solel, Passover on the Farm, Paint & Nosh, and more, **this spring and summer offered dozens of ways to engage with land, spirit, and community.**

Reaching **958 participants** in Quarter 3, each gathering rooted participants in Jewish rhythm, ecological connection, and collective celebration.



FROM SEED TO SPIRIT

In partnership with Red Earth Movement, we’re empowering local Native nations through Traditional Ecological Knowledge and regenerative land caretaking.

Together, we established gardens in tribal education centers and schools, sparking enthusiasm and creativity among Native youth. Red Earth Movement Leadership said: *“We remain committed to expanding the Seed to Spirit program to reach even more Native youth and are grateful for our alliance with Coastal Roots Farm.”*



One young participant said: *“I thought this was going to be boring, but this is so much fun!”*



IN COMMUNITY

QUARTER 3 IMPACT (APRIL-JUNE 2025)

GATHERING AT THE TABLE

Our sold-out June Farm-to-Table Dinner brought 64 guests together for a soul-filling evening of seasonal dishes prepared by Chef Kelston Moore of Fox Point Farms, complete with Fox Point beer pairings and wines from Caves Wine Shop.

This intimate series offers more than just a meal—it creates space for shared values, new friendships, and deep connection to the land that sustains us. Four more dinners remain this season.



FILMS AND STORIES UNDER THE STARS

We launched our Farm Film & Music Series with a powerful screening of *Common Ground*, and a panel featuring leaders in soil health and regenerative agriculture. This 5-part summer series invites community members to engage with urgent issues through film, live music, and meaningful dialogue.



FUNDER HIGHLIGHT

At the Farm, no student or camper is turned away for inability to pay. More than \$586,748 is distributed in scholarship funds annually to ensure everyone can participate in Camps, Field Trips, and After School on the Farm. Support from the Solomon Dutka Fund in the New York Community Trust, and friend of the Farm Jane Best, help make camps accessible for all. We received \$10,000 from the Solomon Dutka Fund to underwrite camp scholarships.



VOLUNTEERING WITH PURPOSE

This Quarter, 9 local companies and organizations rolled up their sleeves in private group volunteer experiences, tackling everything from crop planting to farm beautification. These hands-on days strengthen teams and sow impact.

Thank you, Anti-Defamation League, Big Brothers Big Sisters, COX Communications, Deloitte, Intuit, Junior League of San Diego, National Charity League San Dieguito, ThermoFisher, and UCSD Garden Club!



THANK YOU Q3 DONORS

We rely on community support to do this important work.

Estee Aaronson Sara Abarabanel Adi Hawk Aldrich John Alexander and Johnny Lipsey Stephen Alexander Amber Dubrin Trudi Andres Suzanne Bates KC and Eric Bauer Elaine Becerra Jill Beck Shannon Behar Syd Belzberg Albert and Karin Bensusen Terry Berenson Gus Bergsma Marsha Berkson Meghan Bernetich Jane and TJ Best Anette Blatt Sara Blodgett and Jason Tucker Shona Borevitz Mary Borevitz Giza Braun Sara Brown Jaimie Altman and Alexander Buggy Morgan and Will Burger Claudio Burgin Eric Burns Meghan Byrnes Jenny Camhi Casey Castillo Jackie Chaney Abraham Chen June Chocheles Patrick Choothesa Jamie Cohen Suzanne Cohen Art Cohen Ronald and Lupita Cohn Cox Communications Lynne Copeland Shayna Coplan Veronica Cox Jacqueline Crosby Rachel Cross Culture Insurance Janie DeCelles Kathleen Delaney Ingrid de Llamas	Debbie Deverett Laura Diede Kathleen Diehlmann Dara Ditsworth Esther Dobrin Joel Dorfan Dr. Bronner's Debby and Steve Dresner Rocio Dresser Jan Driscoll Douglas Duncan Lucy Eagleson Lizbeth Ecke Amy Eilts Marti and Leo Eisenberg EisnerAmper Linda Escobedo Heather Eudy Martin Fabani Dean Ferraro Madison Fish Lynn and Todd Frank Mindi and Doug Frankel Sara Freund Laura Galinson Heidi Gantwerk Mike Gellman Nicole and Ari Gesher Julie Glass Meryl Goldberg Marla Goodman Warren Gorowitz Laurie Greenberg Uriel Grezemkovsky Steve Grimaldi Jennifer Grodberg Carla Grossmann Shaina Gross Dawn Grossman Beth Gutierrez Carol Hannasch Kristy Harden Shoshannah Hart Karen Helrich and Bertram Edelstein Susan and John Henkel Karen Henken Scott Henry Angelica Hernandez Renee Herrell Fitzgerald Shelley and Jeremy Hershberg Laurie Hoshaw Antonyo Howard	Michelle and Kelly Huang Ann Hunter-Welborn and David Welborn Jerri-Ann and Gary Jacobs Ann and Richard Jaffe Janecek Family Fund Jewish Community Foundation Whitney Johndro Junior League of San Diego Morgan Justice Black Alan Kannof Karen Henken Shayna Kaufmann Jeryl Kessler Sheryl Kline Jessica Kort and David Manley Natalie Koski-Karell David Kramer Jason Kubrock Robin Kuhn Jessica Laemmle Reut and Eli Landau Kim Lande Tamara Landes Jesse Langley Susan Lapidus Lazy Acres Laura Leach Allison Leeds Rich Leib Sharon Leib Leichtag Foundation Karen Lerch Ryan Lesniewski Jaime Levine Chelsea Levron Travis Levy Josh Lichtman Marley Lieberman Eileen and Paul Linden Lisa and Douglas Goldman Fund Andrea Liss Sylvia Liwerant Betzy Lynch Erika Maccani Lane Macy Kiefaber Scott Malcom Tom Malloy Thomas Marchisa Cami Mattson	Keith Mautner May & Stanley Smith Charitable Trust Sam Mazzeo Nancy Mclennan Melvin Garb Foundation Ellie Messinger-Adams Regina and Eric Meyer Lillie Meyer Enrique Meza Paige Milgrom-Hills Van and Laurie Miller Estela Mitrani Jim Moriarty Scott Mullens Nani Pua Nicole Nettmann Alex Nguyen Ryan O'Connor Leslie Oliver Barbara Orozco-Valdivia Asia and Greg Palmer Vincent Pandes Karen Parry Jeremy Pearl Arlene and Edward Pelavin Renee and Bruce Persky Alexis Piotrowski Dorian Polson Prager Brothers Robin Pruitt Pure Project Rebecca Quevedo- Prastein Michael Rabkin David Rafsky Charles Renert Revival Einkorn Gary Rhodes Nakia Richardson Heidi Robson Candi Rogert and Martin Fabani Rokenbok Fund John Romaker Tina Roy Sean Roy Galit Ryan Megan Ryan Sharon S. Sachs Glenda Sacks San Diego Foundation Gladys Sanders Jacob Sapochnick	Priscila Sarti Guerrero and Javier Guerrero Melanie Schaefer Sue Schaffzin Sam Mazzeo Wendy Schelew Donna Schindler Betsy Schneider Tiffany Schultz Sempra Foundation Dianne Shapp Tina Daly Shen and Bill Shen Elizabeth and Mitch Siegler Karen and Jeff Silberman Allison Smith Debra Sostman Suzy Sostrin Specialty Produce Christine Spencer Jekhyler Spencer Anne Spindel Susanne Stanford Anasuya Strasner Lia Strell Joanna Swerdlow The Solomon Dutka Fund Thursday Club Jennifer Tillman Tishmall Turner Emma Tuttleman Carole Ursetti Cipriano Vargas Sara Vaz Ian Vernon Viasat Jeff Vistica Ellen Waddell Kelsey Wadman Kristen Wall Susan Weinbach David Weiner Oliver Welty Kristine Wexler William Tellam Foundation Sherry and David Winkler Sheila Wirick Sharleen Wollach Diana Wright Linda Zangwill Larry Zeiger Ben Zeskind
--------------------------------------------------------------------------------------------------------------------------------------------------------------------------------------------------------------------------------------------------------------------------------------------------------------------------------------------------------------------------------------------------------------------------------------------------------------------------------------------------------------------------------------------------------------------------------------------------------------------------------------------------------------------------------------------------------------------------------------------------------------------------------------------------------------------------------------------------------------------------------------------------------------------------------------------------------------------------------------------------------	-------------------------------------------------------------------------------------------------------------------------------------------------------------------------------------------------------------------------------------------------------------------------------------------------------------------------------------------------------------------------------------------------------------------------------------------------------------------------------------------------------------------------------------------------------------------------------------------------------------------------------------------------------------------------------------------------------------------------------------------------------------------------------------------------------------------------------------------------------------------------------------------------------------------------------------------------------------------------------------------------------------------------------------------	------------------------------------------------------------------------------------------------------------------------------------------------------------------------------------------------------------------------------------------------------------------------------------------------------------------------------------------------------------------------------------------------------------------------------------------------------------------------------------------------------------------------------------------------------------------------------------------------------------------------------------------------------------------------------------------------------------------------------------------------------------------------------------------------------------------------------------------------------------------------------------------------------------------------------------------------------------------------------------------------------------------------	----------------------------------------------------------------------------------------------------------------------------------------------------------------------------------------------------------------------------------------------------------------------------------------------------------------------------------------------------------------------------------------------------------------------------------------------------------------------------------------------------------------------------------------------------------------------------------------------------------------------------------------------------------------------------------------------------------------------------------------------------------------------------------------------------------------------------------------------------------------------------------------------------------------------------------------------------------------------------------------------------------------------------------	---------------------------------------------------------------------------------------------------------------------------------------------------------------------------------------------------------------------------------------------------------------------------------------------------------------------------------------------------------------------------------------------------------------------------------------------------------------------------------------------------------------------------------------------------------------------------------------------------------------------------------------------------------------------------------------------------------------------------------------------------------------------------------------------------------------------------------------------------------------------------------------------------------------------------------------------------------------------------------------------------------------

DONATE TODAY.

